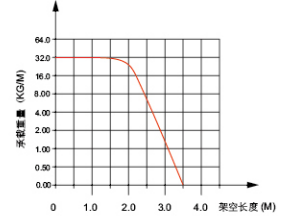
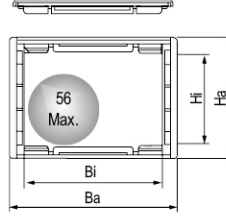
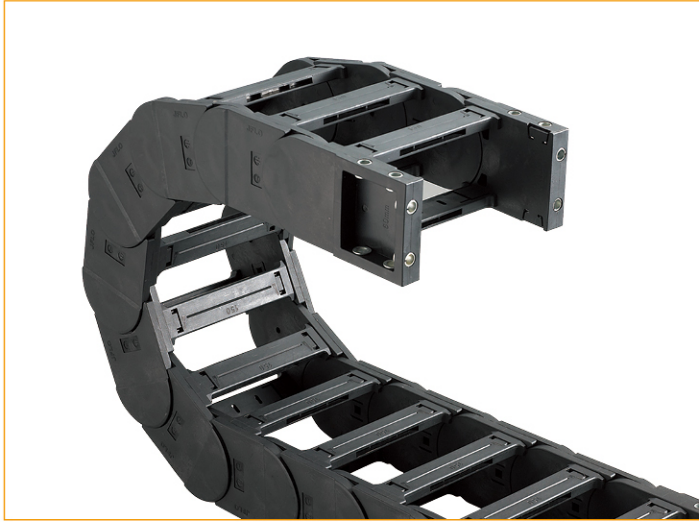


J60Q.1.S 系列 - 桥式两侧可打开

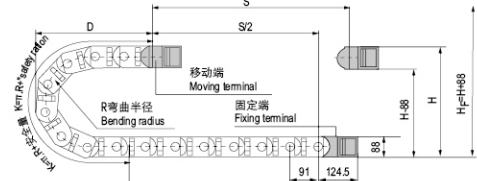
Series of J60Q.1.S-Bridge type open of both side

JFLO[®]



- ◎ 适用于直径 56 毫米以下线缆 Suitable for 56mm or less of cable.
- ◎ 可加装导向槽重载、长距离运行 (10~200 米)
The cable chain can be mounted guideway to overloading and long distance running (10-200 meters).

主要技术参数 Basic technical data



节距=91mm, 每米节数=11, 链长=S/2+K, S=行程距离, K=π.R+“安全量”
Pitch=91mm, link per meter=11, length of chain=S/2+K, S=stroke. K=π.R+“safety ration”+1 Pitch

R	135	150	175	200	250	300	450
H	358	388	438	488	588	688	988
D	270	285	310	335	385	435	585
K	637	728	819	910	1001	1183	1638

安装实际高度:H_f=H+88mm(负载 2.2kg/m)
Actual mounting height:H_f=H+88mm(load 2.2kg/m)

示意图 Drawing

拖链型号 Cable Chain No.	内高 Hi	内宽 Bi	外高 Ha	外宽 Ba	款式 Styles	弯曲半径 Bending radius R	固定接头类型及参数 Bracket type and parameters								
							可配接头类型 Applicable bracket type	孔径 Bore diameter Φ1	孔距 (mm)hole distance						接头代号 Bracket No.
									A	B	C	D	E	F	
J60Q.1.75S	60	75	88	111	Q.S	135,150,175, 200,250, 300,450	F-Q	9	35	98	125	45	20	115	J60Q.1.75S-FJT
J60Q.1.100S	60	100	88	136	Q.S		F-Q	9	35	123	125	45	20	140	J60Q.1.100S-FJT
J60Q.1.125S	60	125	88	161	Q.S		F-Q	9	35	148	125	45	20	165	J60Q.1.125S-FJT
J60Q.1.150S	60	150	88	186	Q.S		F-Q	9	35	173	125	45	20	190	J60Q.1.150S-FJT
J60Q.1.175S	60	175	88	211	Q.S		F-Q	9	35	198	125	45	20	215	J60Q.1.175S-FJT
J60Q.1.200S	60	200	88	236	Q.S		F-Q	9	35	223	125	45	20	240	J60Q.1.200S-FJT
J60Q.1.250S	60	250	88	286	Q.S		F-Q	9	35	273	125	45	20	290	J60Q.1.250S-FJT
J60Q.1.300S	60	300	88	336	Q.S		F-Q	9	35	323	125	45	20	340	J60Q.1.300S-FJT
J60Q.1.350S	60	350	88	386	Q.S		F-Q	9	35	373	125	45	20	390	J60Q.1.350S-FJT

注: S 表示两侧可打开 Note: S indicates that the both side open

单位 (unit): mm

固定接头类型及参数 Fix bracket type and parameters (见表格 See table)

F-Q型接头 F-Q type bracket

订货示例 Order Example

示例 拖链内高 60mm、内宽 75mm、半径 135mm、长度 1 米 /11 节 (Sample: inner height 60mm, inner width 75mm, radius 135mm, length 1 meter /11 links)

拖链 Chain J60Q.1.75S R135 1000mm /11 Links

接头 Bracket J60Q.1.75S -XJT 1 副 (Set)

配件 Accessories 每节装 1 个竖隔片 /1 个横隔片 (1 vertical shim/1 horizontal shim can be mounted in every link)

注: 可根据客户要求定制各种规格。 Note: Various sizes can be customized according to customer requirements.